

# Evaporating coil type DX

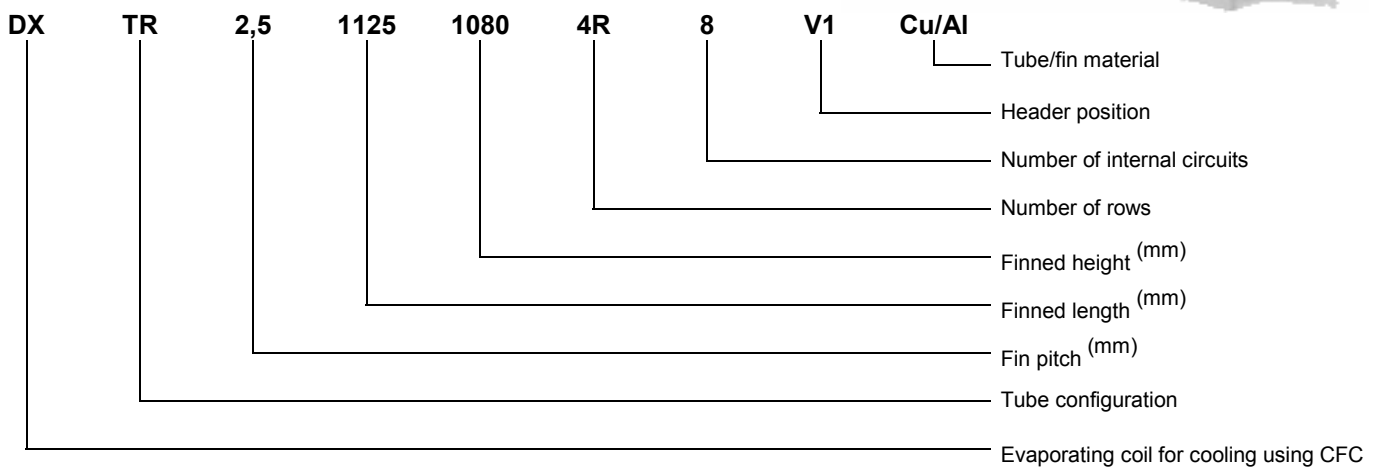
## Applications

ttc norge's evaporating coil type DX applications:

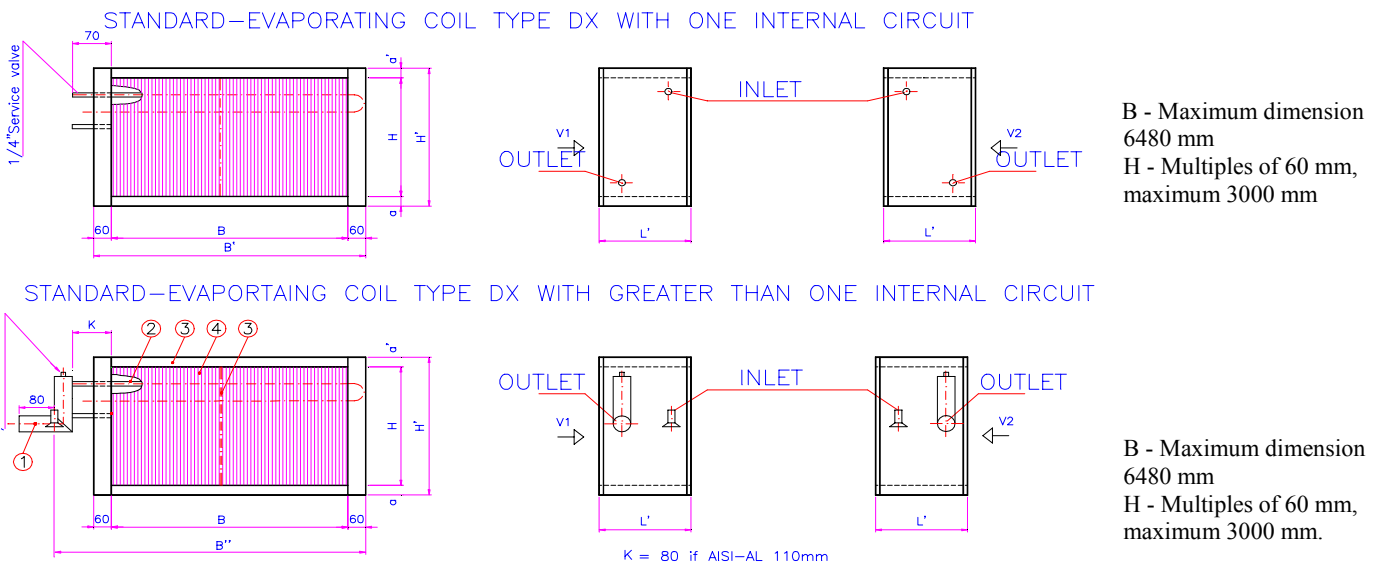
- cooling of air in air conditioning and industrial processes.



## Coil nomenclature



## Dimensions



# Evaporating coil type DX

## Design requirements

To enable us to design evaporating coils type DX we require the following:

- Air side:**
- Three of the following values:
    - Air volume
    - Air on temperature/relative humidity
    - Air off temperature/relative humidity
    - Duty
- Refrigerant side:**
- Evaporating temperature
  - Refrigerant type

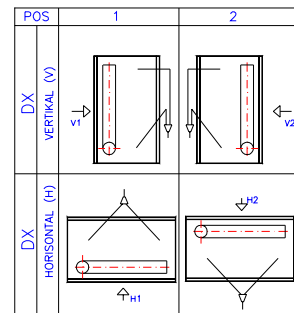
## Standard connections

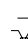
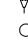

The evaporating coils are supplied with a service valve fitted and are sealed and charged with nitrogen to 1 bar.

**Suction line** Evaporating temperature -5 to +10°C and condensing temperature 35°C to 45°C.

## Connection positions

The design of evaporating coils is based upon the counter-flow principle and coils need to be installed as shown in the illustration below to achieve the design duty.



 = AIR FLOW DIRECTION  
 = LIQUID INLET  
 = GAS OUTLET

## Accessories.

- Drip tray
- Moisture eliminator

